

**INTEGRATED MULTIMODA DEVELOPMENT  
ACCELEVATING INTERCONNECTIVITY  
ASEAN And BEYOND**

**KHAIRUL MAHALLI  
INDONESIA CONTAINER DEPOT ASSOCIATION**

**JAKARTA, 3rd of MARCH 2017**



# INDONESIA GOVERNMENT POLICY RELATED TO CONTAINER DEPOT

## Keputusan Menteri Perhubungan No. KP 705 Tahun 2014 Tentang ASDEKI

- Peraturan Menteri Perhubungan RI Nomor: KM.47 Tahun 2008 tentang Penyelenggaraan dan Pengusahaan Depo Petikemas.
- Peraturan Menteri Perhubungan RI Nomor: PM83 Tahun 2016 tentang Penyelenggaraan dan Pengusahaan Depo Petikemas.



# ASDEKI MEMBERS IN INDONESIA PORTS



# SCOPE OF CONTAINER DEPOT



**STORAGE**



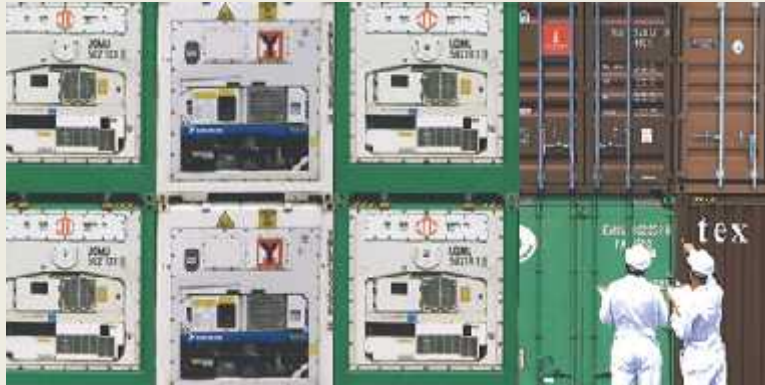
**WASHING**



**MAINTENANCE & REPAIR**



# SCOPE OF CONTAINER DEPOT



**CONTAINER SURVEY**



**LIFT ON/OFF**



**STUFFING/STRIPPING**

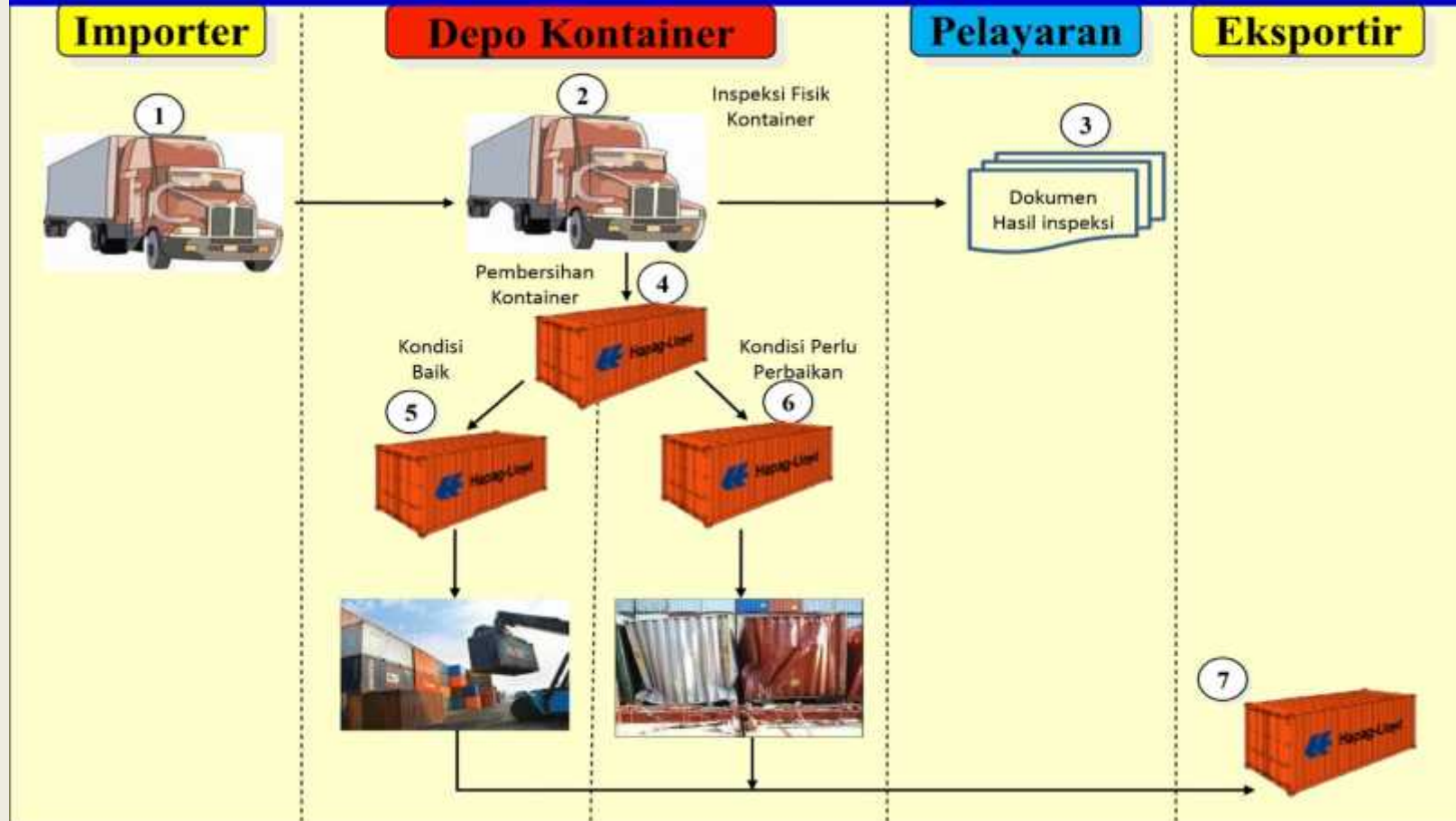


# CONTAINER DEPOT BUSINESS PARTNER

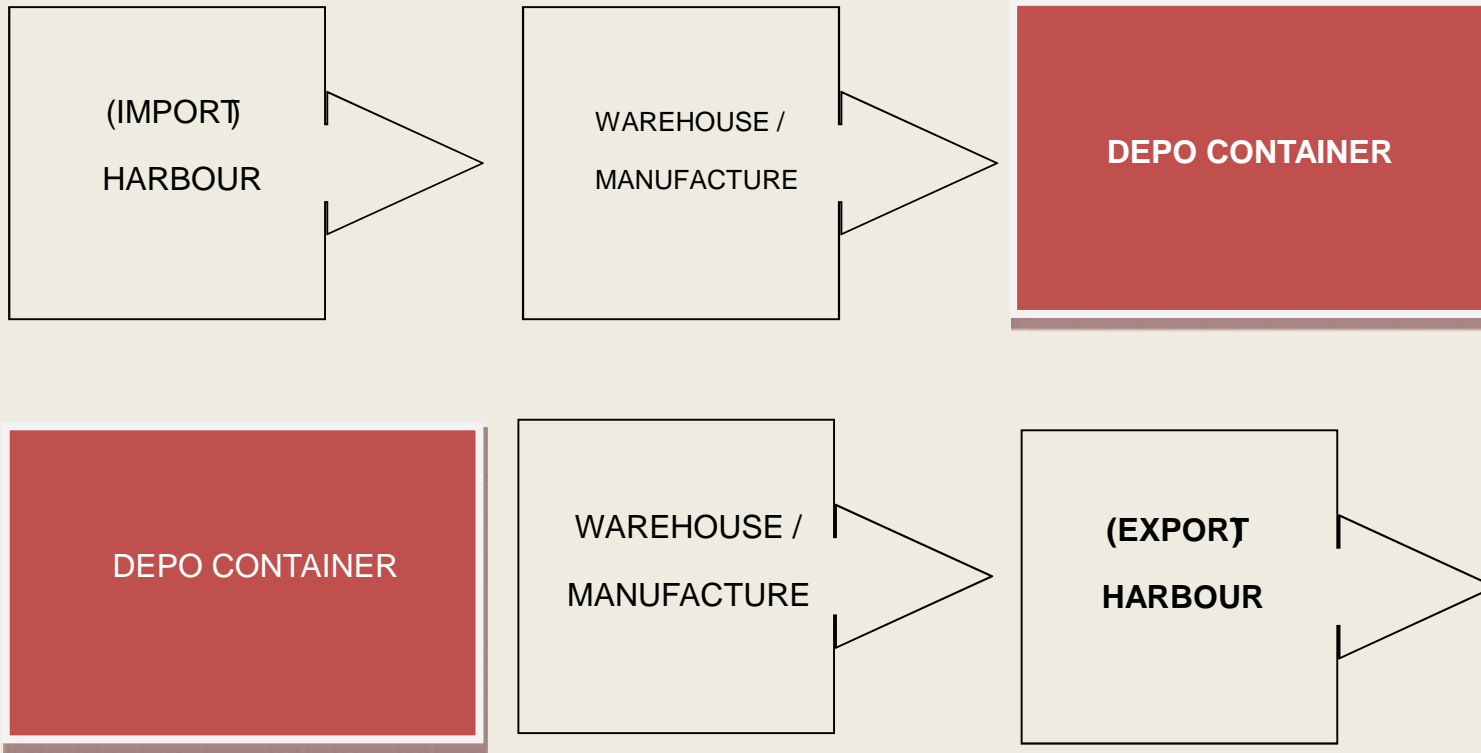
- PRINCIPAL (SHIPPING LINE)
- SHIPPER/CONSIGNEE
- FREIGHT FORWARDER
- NVOCC (NON VESSEL OPERATOR CONTAINER CARRIER)



# ALUR ANGKUTAN TRUCK DARI/KE DEPO PETIKEMAS



# CONTAINER DEPOT IN LOGISTICS INDUSTRY



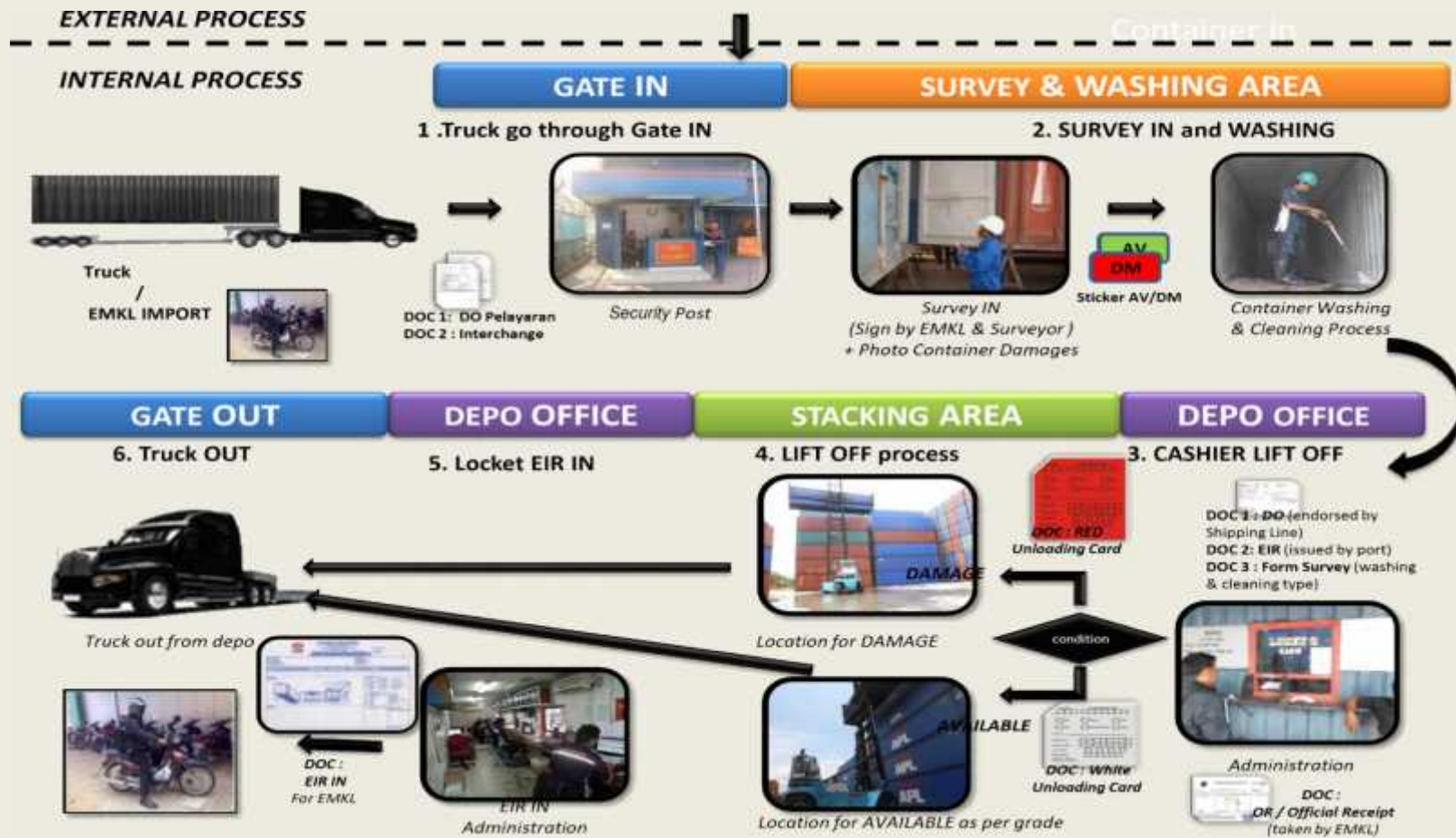


# CONTAINER DEPOT IN SUPPLY CHAIN

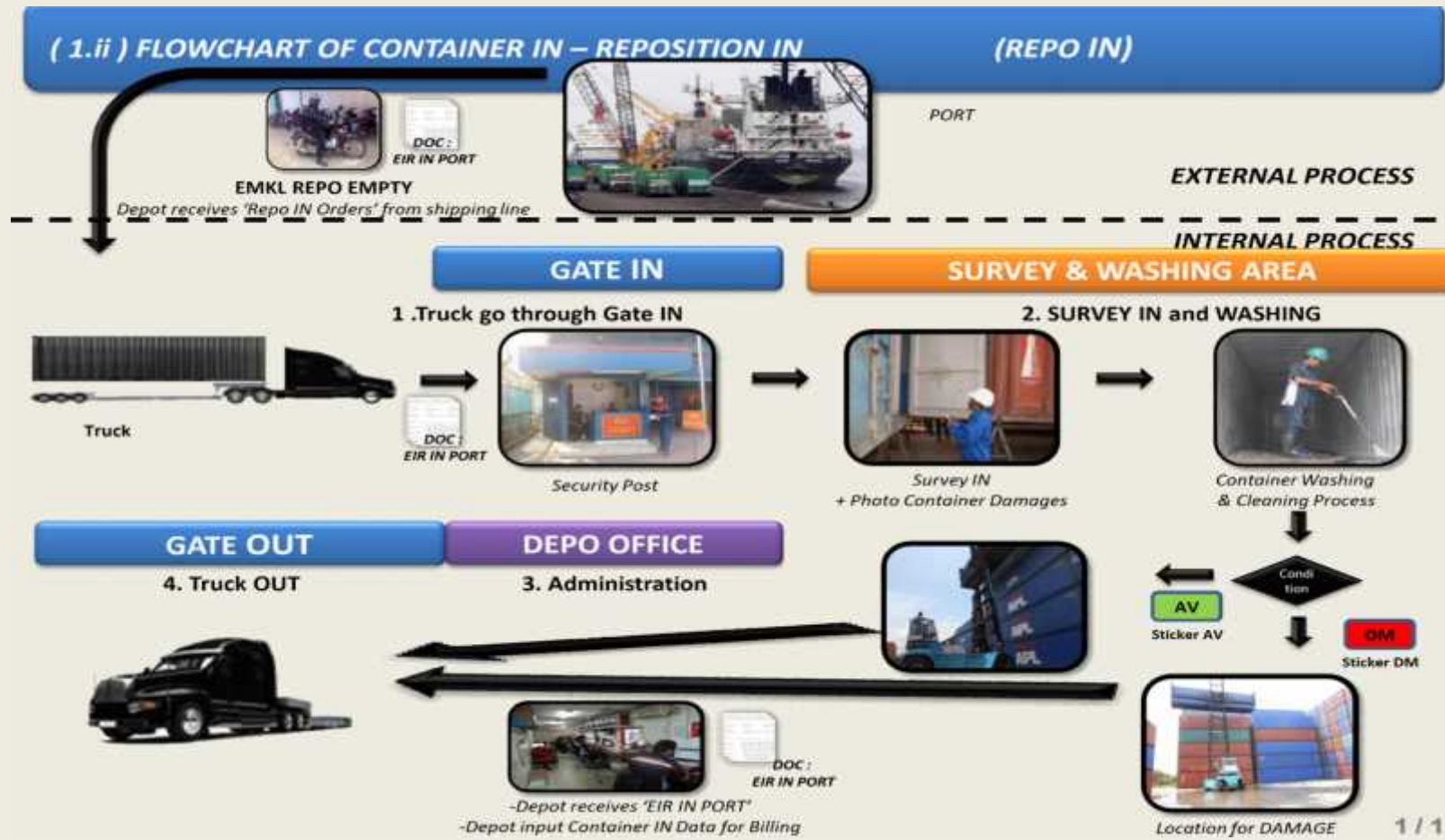
1. Be a part of Logistics Infrastructure as a container storage in order to support the logistics process
2. To make a smooth flow and efficiency in supply chain especially at international trade (export-import)
3. To support efficiency of Trade Management in National Logistics System



# BUSINESS PROCESS

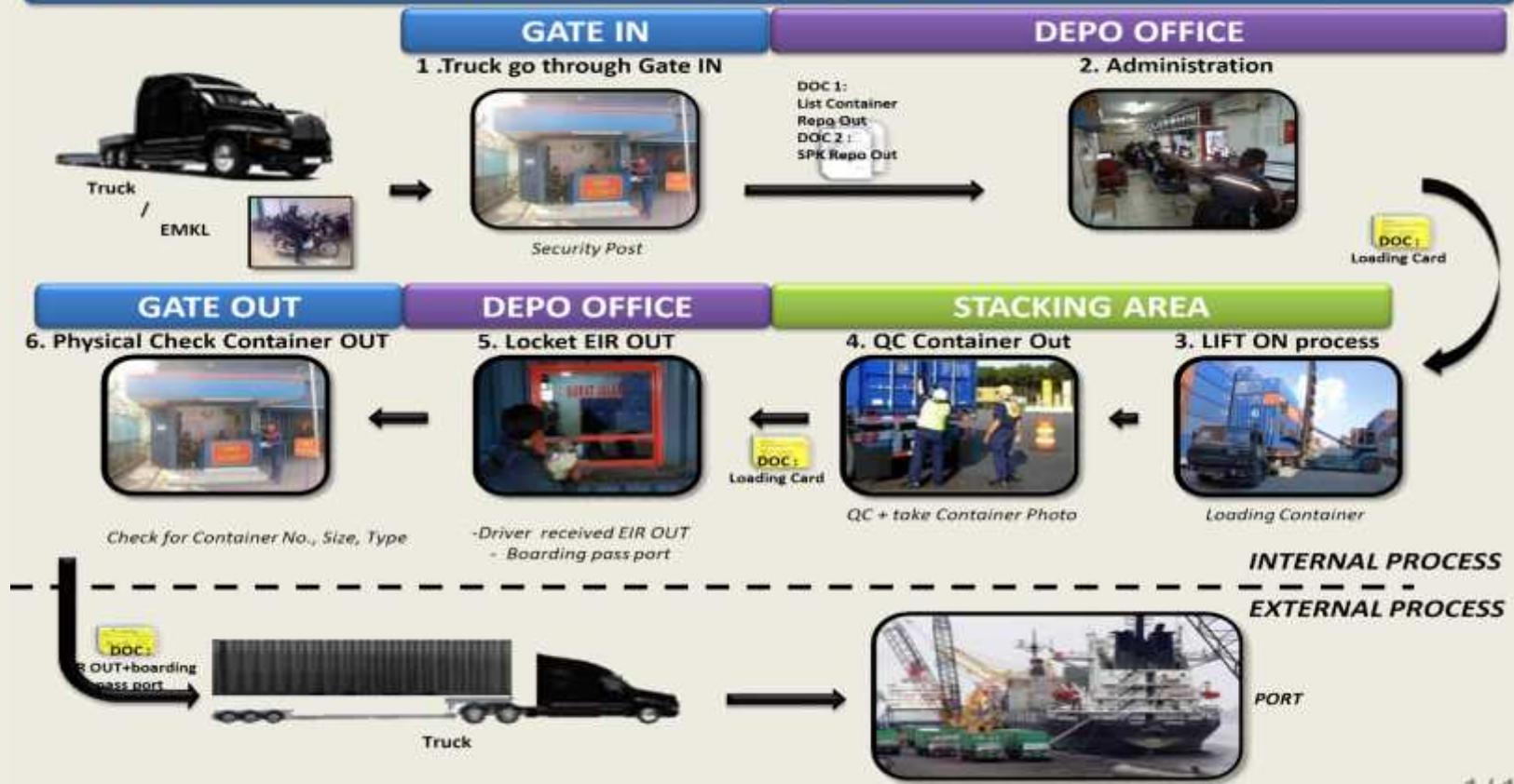


# BUSINESS PROCESS

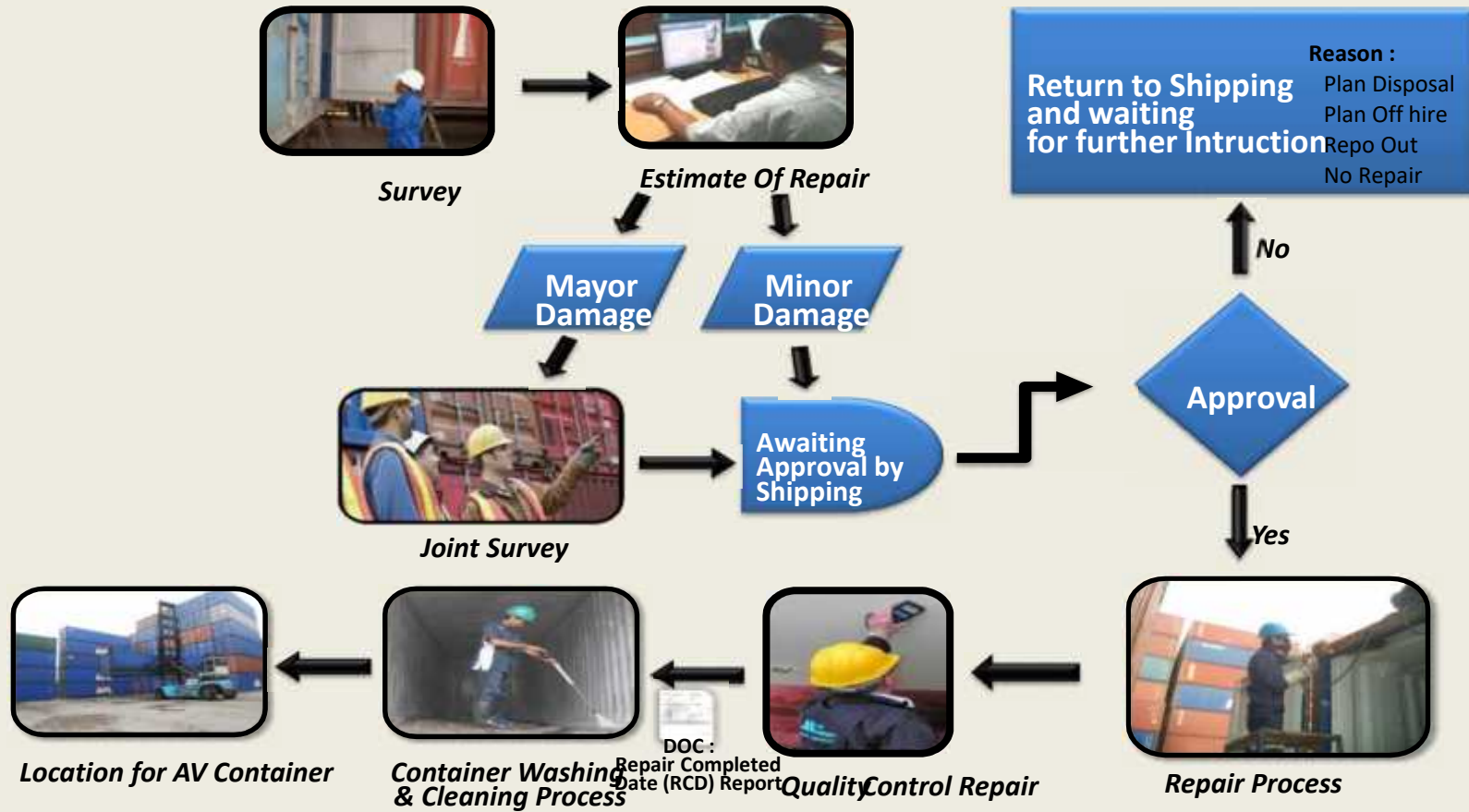


# BUSINESS PROCESS

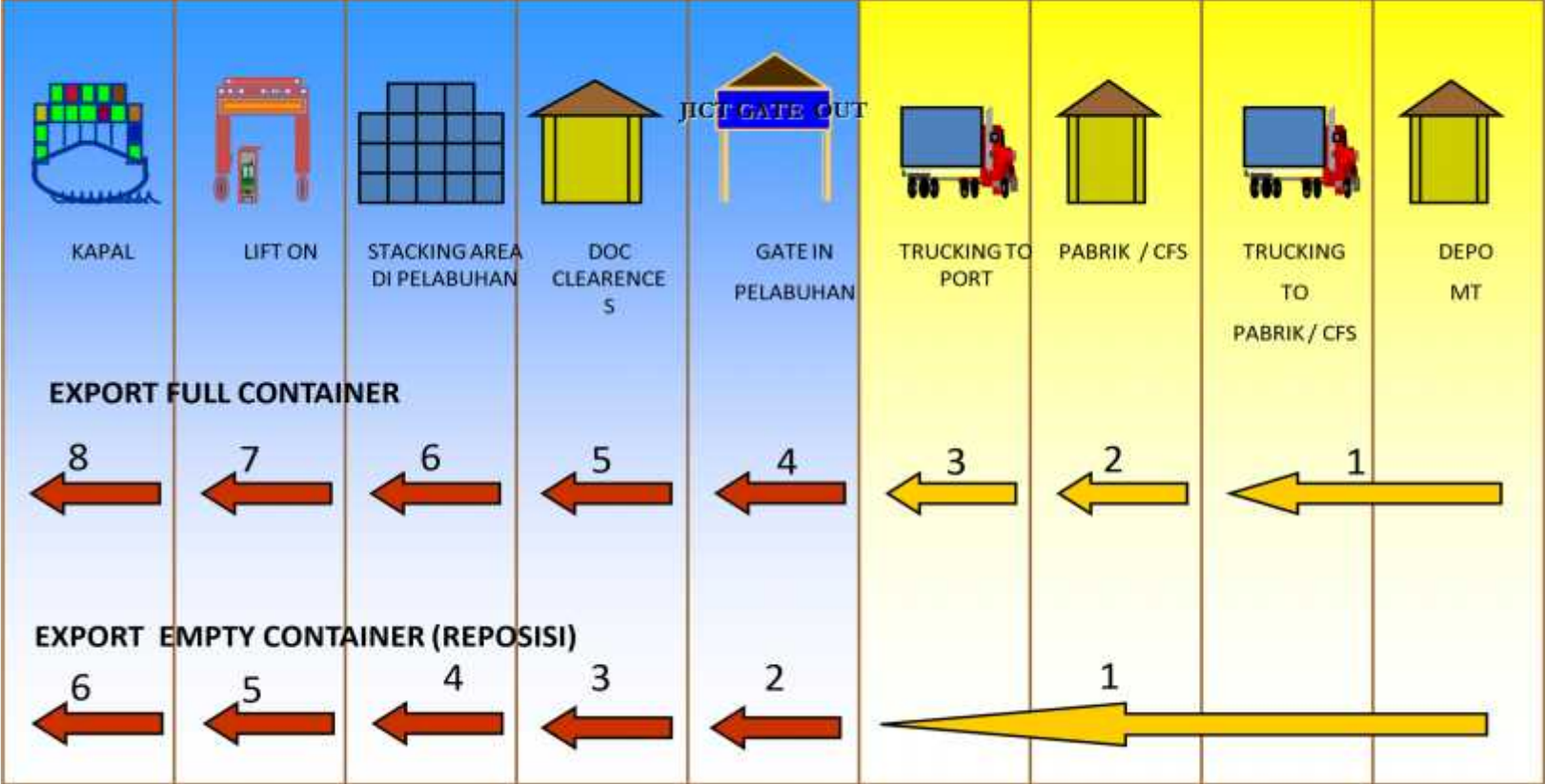
## ( 2.ii ) FLOWCHART OF CONTAINER OUT – REPOSITION OUT ( REPO OUT )



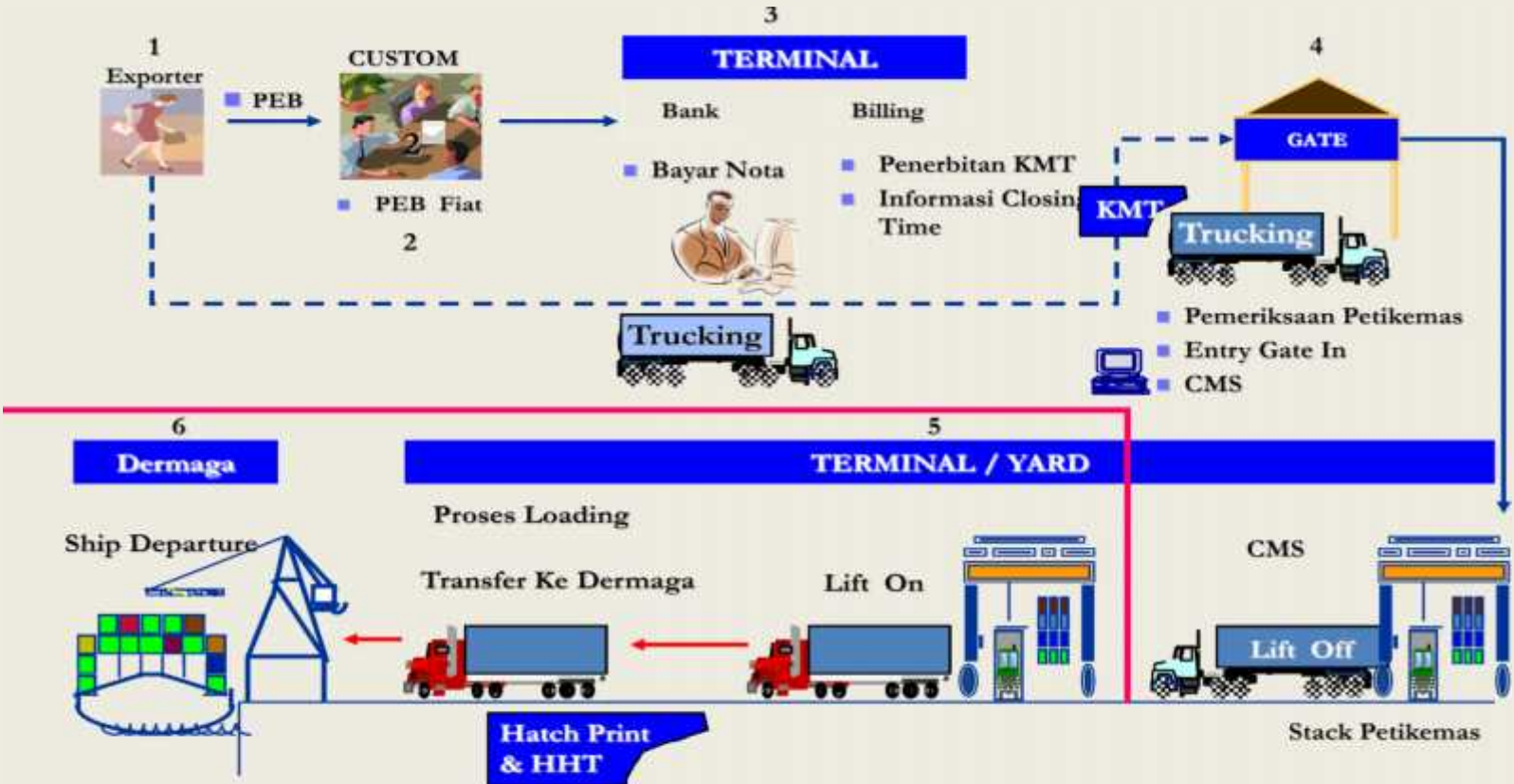
# BUSINESS PROCESS



# EXPORT PROCEDURES



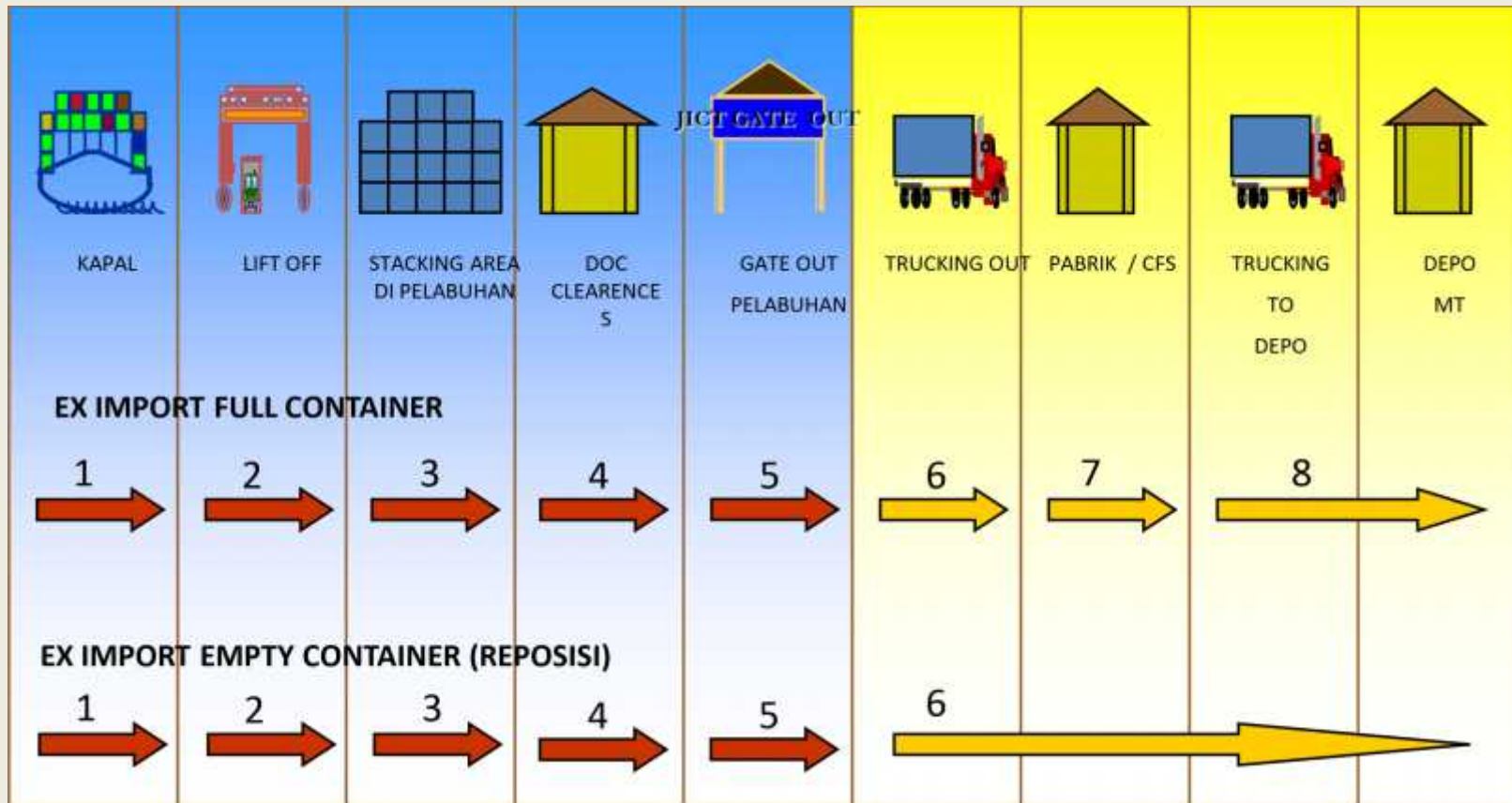
# EXPORT PROCEDURES



KMT = Kartu Masuk Terminal      HHT = Hand Held Terminal      CMS = Container Movement Slip

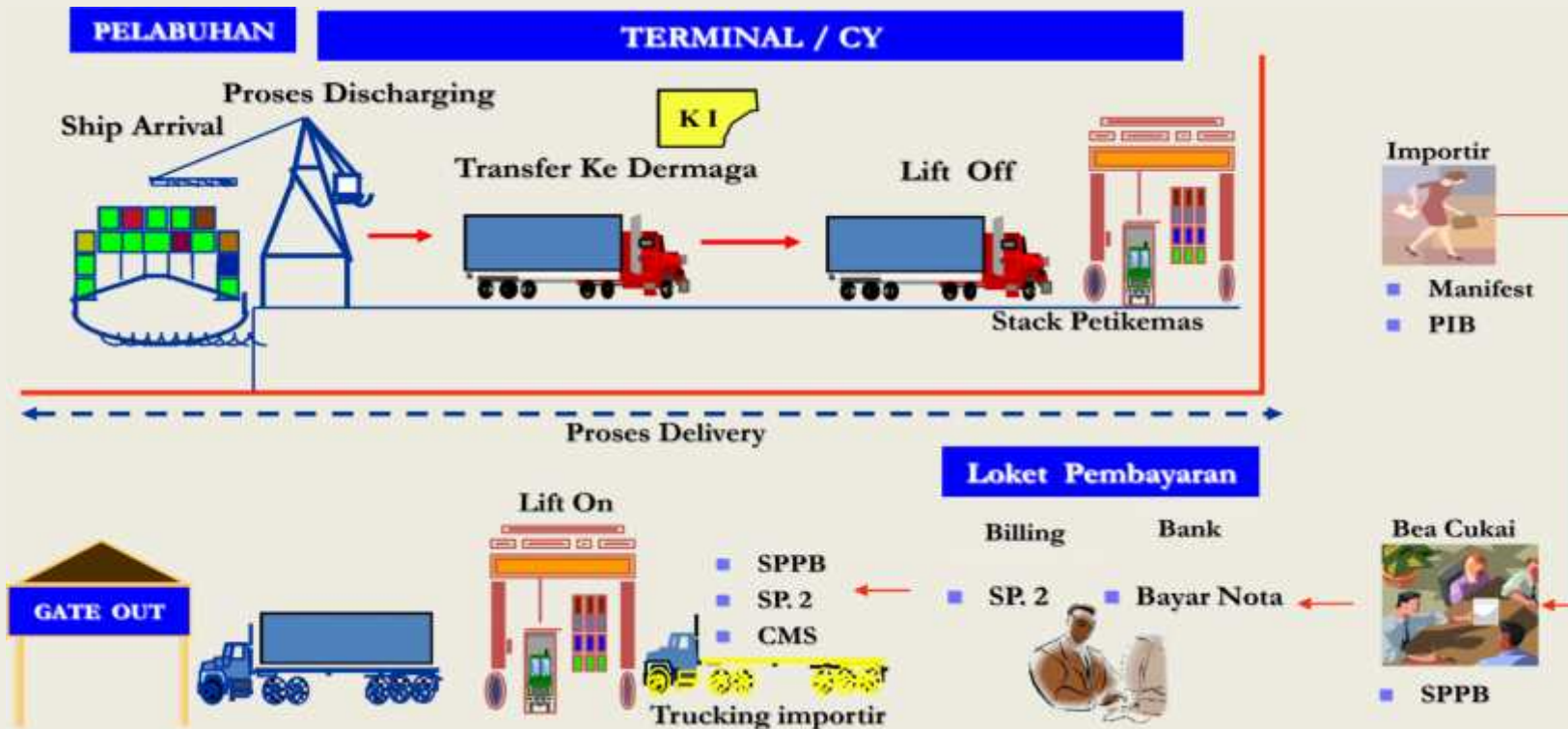


# IMPORT PROCEDURES





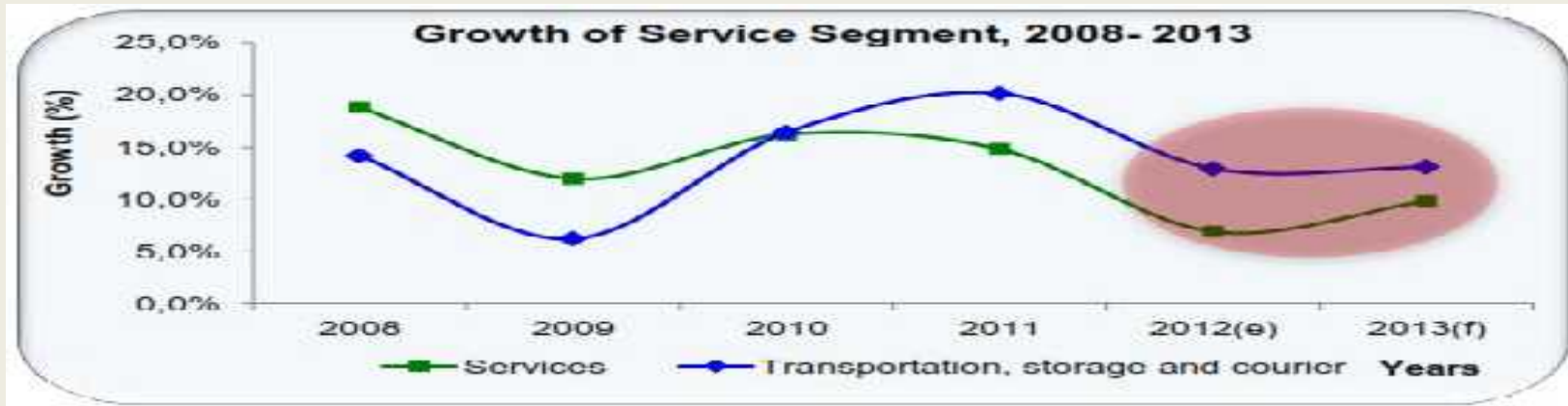
# DISCHARGE AND DELIVERY PROCEDURES



KI : Kartu Impor ; SPPB : Surat Persetujuan Penyerahan Barang ; SP2 : Surat Penyerahan Petiekemas ; CMS = Container Movement Slip ; PIB : Pemberitahuan Impor Barang



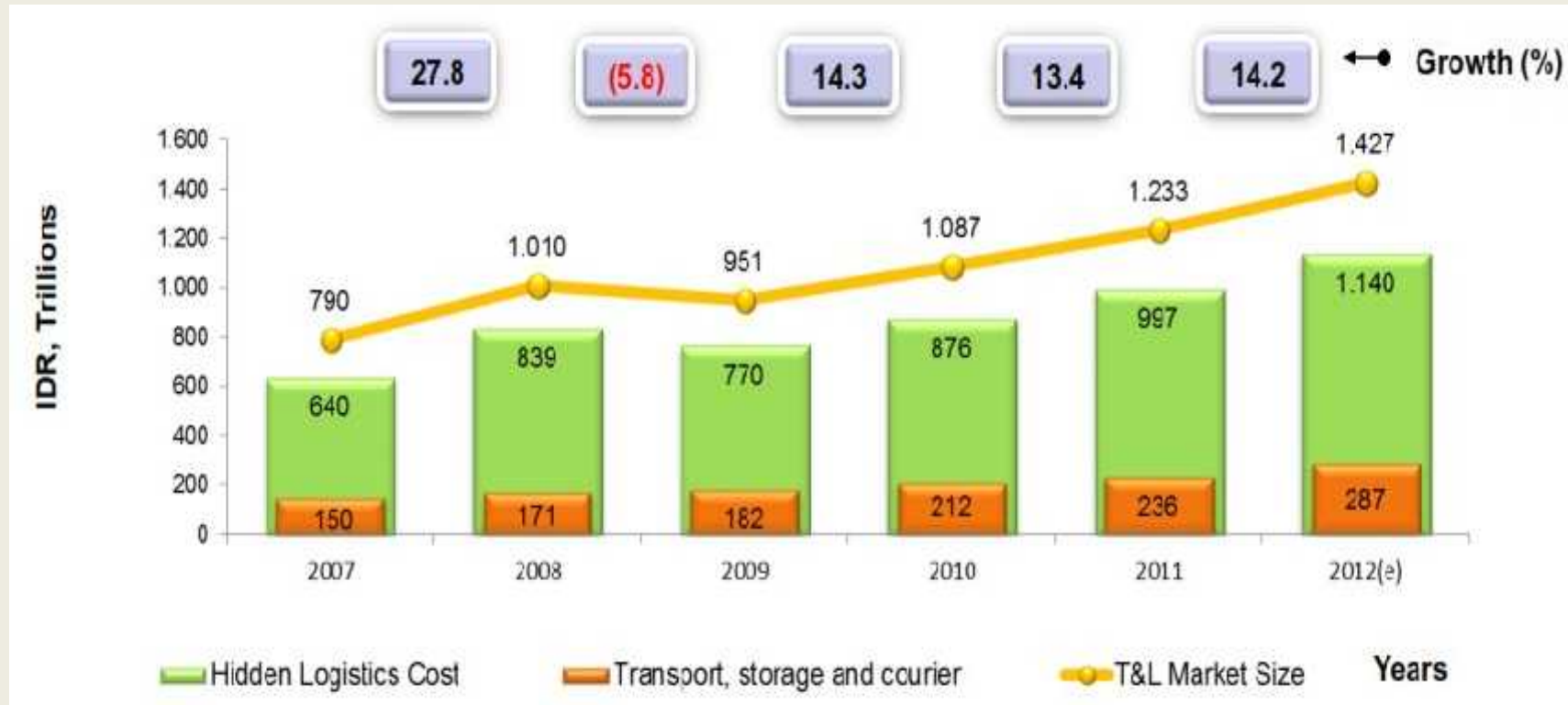
# INDONESIA TRANSPORT & LOGISTIC MARKET



SOURCE : F&S,2013



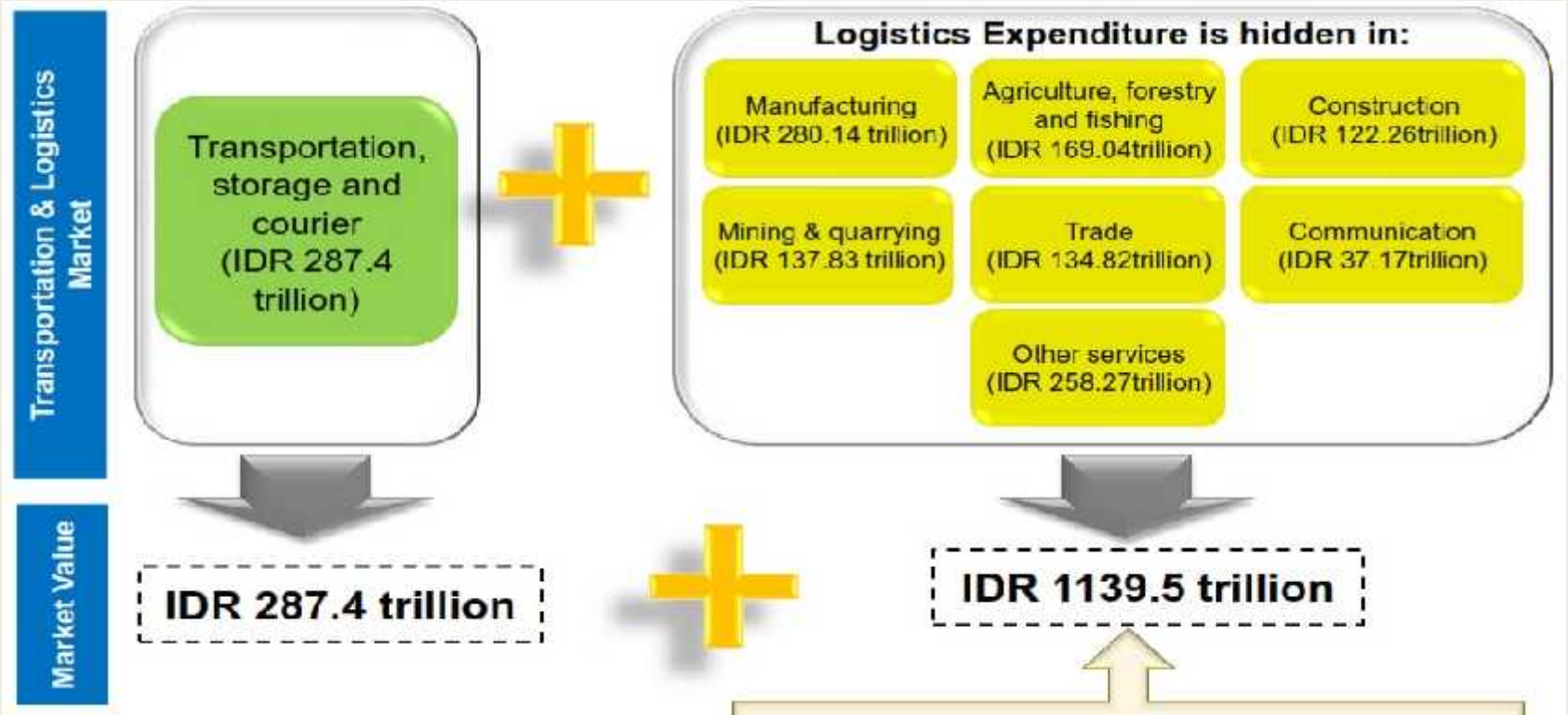
# INDONESIA TRANSPORT & LOGISTIC MARKET



SOURCE : F&S,2013



# INDONESIA TRANSPORT & LOGISTIC MARKET



SOURCE : F&S,2013



# CONTAINER DEPOT CONTRIBUTION

Container Depot Business contribute 25% of National Logistics Flow (Source :Ocean Week Aug 12, 2016)



# THANK YOU



**ASDEKI BUSINESS VISIT TO NORTHPORT, PORT KLANG, MALAYSIA 2016**

